



Ningbo Longlive was founded in 1980, covering an area of 30,000 square meters. We are specialized in manufacturing brass fittings and valves, exported to Europe, America, South America, Australia, Japan, Dubai, etc. There is the whole set of equipment of forging, stamping, casting, machining, polishing, plating, PVD and testing machines.

Since 2008 Longlive has been focusing on LEAD FREE products due to California State Law AB1953. We can produce



Spectrographic analysis



Roughness Comparison



Laser



Salt spray test



SPECIAL THREAD CMC MACHINE



Three coordinate measuring



Screw gauge



Hardness Tester



Thickness gauge



Vernier Caliper



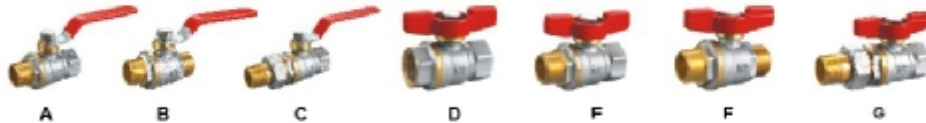
Gauge

BALL VALVES



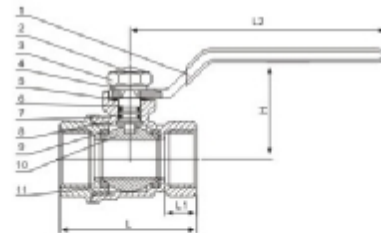
LL-20001

Field of application: Water
 Maximum work pressure: PN30
 Temperature: -20°C-120°C
 Female Thread connections comply with ISO228 (BS2779)
 Forged Body
 Vibration-proof handle nut
 Also FxM, MxM thread is available



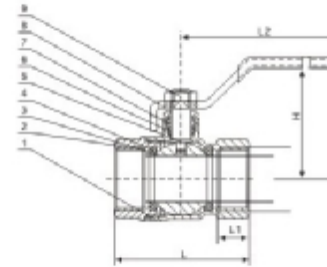
Material list of main parts

No.	Part name	Material	No.	Part name	Material
1	Handle	Steel with PVC	7	O-ring	NBR
2	Proof	PVC	8	Bonnet	Brass
3	Locknut	Steel	9	Seat	PTFE
4	Washer	Steel	10	Ball	Brass chromed
5	Gasket	NBR	11	Body	Brass
6	Stem	Brass	12	Butterfly handle	Aluminum



Structure Dimensions-Lever handle

Spec.	Port (mm)	L	H	L1	L2	Spec.	Port (mm)	L	H	L1	L2
1/2"	14.5	52	43	13	83	1-1/4"	31	80	89	17	137
3/4"	19	60.5	49	14	115	1-1/2"	40	90	77	18	137
1"	24	64	54	15	115	2"	50	110	89	21	161



Field of application: Water
 Maximum work pressure: PN30
 Temperature: -20°C-150°C
 Female Thread connections comply with ISO228 (BS2779)
 Forged Body
 Vibration-proof handle nut
 Also FxM, MxM thread is available

Material list of main parts

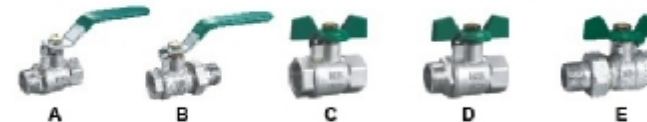
No.	Part name	Material	No.	Part name	Material
1	Body	Brass	6	Gasket	PTFE
2	Bonnet	Brass	7	Press Nut	Steel
3	Ball	Brass Chromed	8	Handle	Steel with PVC
4	Seat	PTFE	9	Lock nut	Steel
5	Stem	Brass	10	Butterfly Handle	Aluminum



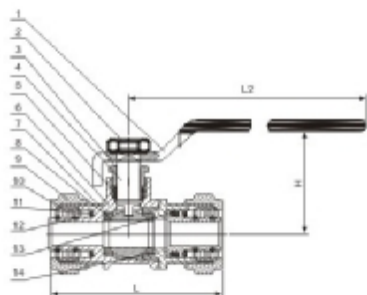
LL-20002

Structure Dimensions-Lever handle

Spec.	Port (mm)	L	H	L1	L2	Spec.	Port (mm)	L	H	L1	L2
1/2"	14.5	47	50.5	12	89	1-1/4"	28	74	74.5	16.5	140
3/4"	19	54	55.5	12	89	1-1/2"	37	83	78.5	17	140
1"	24	64	60.5	14.5	100	2"	45	100	87.5	20	144



BALL VALVES



Field of application: Connection of pex pipe for water supplying
 Maximum work pressure: PN16
 Temperature: -20°C-120°C
 Female Thread connections comply with ISO228 (BS2779)
 Forged Body with compression ends
 Vibration-proof handle nut
 The handle can be lever or butterfly,



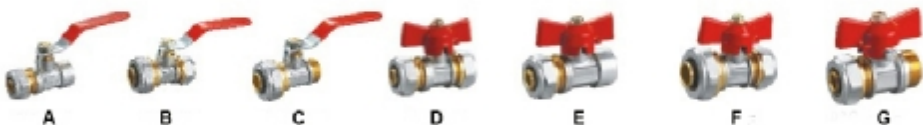
LL-20003

Material list of main parts

No.	Part name	Material	No.	Part name	Material
1	Lever Handle	Steel	7	Lock Nut	Steel
2	Lock Nut	Steel	8	Seat	PTFE
3	Gland Nut	Brass	9	Compression nut	Brass
4	Stem	Brass	10	Compression End	Brass
5	Gasket	PTFE	11	Compression Rings	Brass
6	Body	Brass	12	O-ring	Nbr

Structure Dimensions-Lever handle

Spec.	Port (mm)	L	H	L2	Spec.	Port (mm)	L	H	L2	Spec.	Port (mm)	L	H	L2	Spec.	Port (mm)	L	H	L2
16×1/2M	9	49	39	50	16×1/2F	9	49	39	50	16×16	9	59	40	89	32×32	20	89	56.5	115
20×1/2M	9	51	42	88	20×1/2F	9	51	42	88	16×20	9	62	43	89	40×40	27	99	62	142.5
16×3/4M	12	57	42	87	16×3/4F	12	56.5	43	87	20×20	12	60	40	88					
20×3/4M	12	56	42	88	20×3/4F	12	56	42	88	25×25	15	77	51	104					



Field of application: Water
 Maximum work pressure: PN30
 Temperature: -20°C-120°C
 Female Thread connections comply with ISO228 (BS2779)
 Forged Body
 Vibration-proof handle nut
 The handle can be lever or butterfly, and is fixed on stock steel nut.
 Also FxM thread is available



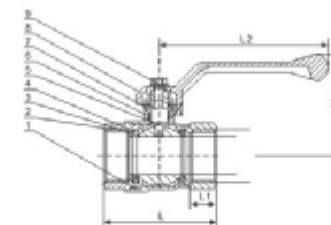
LL-20004

Material list of main parts

No.	Part name	Material	No.	Part name	Material
1	Body	Brass	6	Gasket	PTFE
2	Bonnet	Brass	7	Press Nut	Steel
3	Ball	Brass	8	Handle	Steel with PVC
4	Seat	PTFE	9	Lock nut	Steel
5	Stem	Brass	10	Butterfly Handle	Aluminum

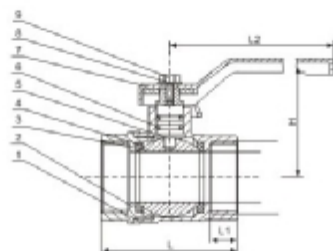
Structure Dimensions-Lever handle

Spec.	Port (mm)	L	H	L1	L2
1/2"	13	46.5	50.5	11	84
3/4"	19	53	53.5	12	84
1"	23	65.5	63.5	14.5	100



BALL VALVES

Field of application: Water
 Maximum work pressure: PN30
 Temperature: -20°C-150°C
 Female Thread connections comply with ISO228(BS2779)
 Forged Body
 Vibration-proof handle nut
 The handle can be lever or butterfly and fixed on stock steel nut.
 Also FxM thread is available



LL-20005



Material list of main parts

No.	Part name	Material	No.	Part name	Material
1	Body	Brass	6	Gasket	PTFE
2	Bonnet	Brass	7	Press Nut	Steel
3	Ball	Brass	8	Handle	Steel with PVC
4	Seat	PTFE	9	Lock nut	Steel
5	Stem	Brass	10	Butterfly Handle	Aluminum

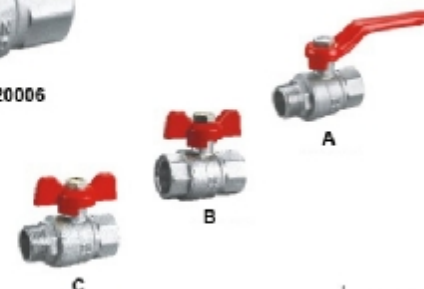
Structure Dimensions-Lever handle

Spec.	Port (mm)	L	H	L1	L2	Spec.	Port (mm)	L	H	L1	L2
1/2"	13	47	47	11	91	1-1/4"	31	75	58	19	71
3/4"	19	55	49	12	93	1-1/2"	40	86	73	21	80
1"	24	62	51	11	93	2"	50	102	83	22	90

Field of application: Water
 Maximum work pressure: PN30
 Temperature: -20°C-120°C
 Female Thread connections comply with ISO228 (BS2779)
 Forged Body
 Vibration-proof handle nut
 The handle can be lever or butterfly fixed on stock steel nut.
 Also FxM thread is available

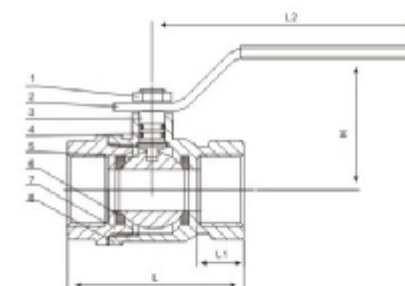


LL-20006



Material list of main parts

No.	Part name	Material	No.	Part name	Material
1	Lock nut	Steel	5	Ball	Brass chromed
2	Handle	Lever steel	6	Seat	PTFE
3	Stem	Brass	7	Body	Brass
4	O-ring	NBR	8	Bonnet	Brass



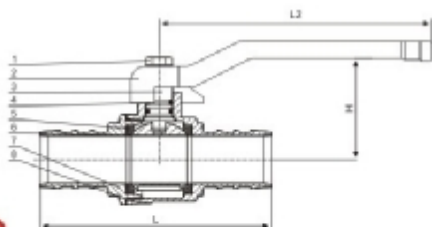
Structure Dimensions-Lever handle

Spec.	Port (mm)	L	H	L1	L2	Spec.	Port (mm)	L	H	L1	L2	Spec.	Port (mm)	L	H	L1	L2
1/2"	15	49	36	11	82	1-1/4"	30	77	54	15	135	3"	69	143	114	24	245
3/4"	19	54	38.5	12	83	1-1/2"	35	97.5	62.5	22	140	4"	85	161	121	25	248
1"	24	70	57	17	113	2"	43	110	70	23	165						



BALL VALVES

Features equal 1/2" PEX crimp style connections on both sides on the valve.
 PEX Tubing can be connected to the valve using appropriate size crimp rings or cinch clamps.
 1/4 - turn steel handle, Teflon seat.
 Forged brass body
 Maximum operating temperature: 100°C
 Non-shock WOG: 400psi
 Standard Working Pressure: 150PSI



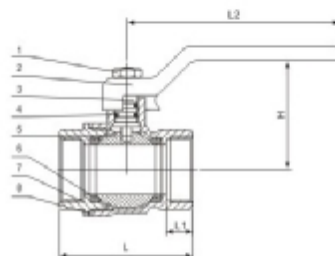
LL-20007

Material list of main parts

No.	Part name	Material	No.	Part name	Material
1	Lock nut	Steel	5	Seat	PEFE
2	Handle	Lever steel handle	6	Ball	Brass ball chromed
3	Stem	Brass	7	Body	Brass
4	O-ring	NBR	8	Bonnet	Brass

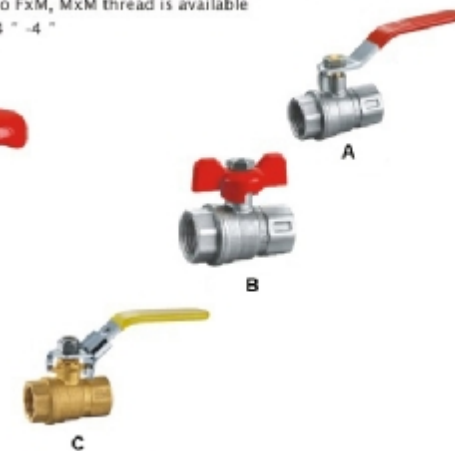
Structure Dimensions-Lever handle

Spec.	Port (mm)	L	H	L1	L2
1/2"	12	78	40		
3/4"	16	88	45		50
1"	21	102	50		119



LL-20008

Field of application: Water
 Maximum work pressure: PN30
 Temperature: 20°C-120°C
 Female Thread connections comply with ISO228 (BS2779)
 Forged Body
 Vibration-proof handle nut
 The handle can be lever or butterfly fixed on stock steel nut.
 Also FxM, MxM thread is available
 1/4" - 4"



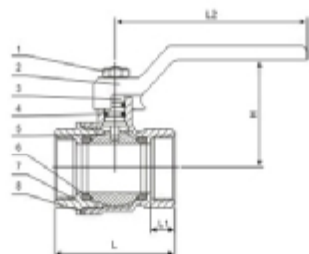
Material list of main parts

No.	Part name	Material	No.	Part name	Material
1	Lock nut	Steel	5	Ball	Brass chromed
2	Handle	Lever steel	6	Seat	PTFE
3	Stem	Brass	7	Body	Brass
4	O-ring	NBR	8	Bonnet	Brass

Structure Dimensions-Lever

Spec.	Port (mm)	L	H	L1	L2	Spec.	Port (mm)	L	H	L1	L2	Spec.	Port (mm)	L	H	L1	L2
1/4"	10	47	38.5	11	80	1"	23	70	56.5	17	104	2-1/2"	56	131	122	28	244
3/8"	10	47	38.5	11	80	1-1/4"	30	79	67.5	17	133	3"	64	142	244	29	244
1/2"	14.5	52	44	12	88	1-1/2"	35	85	76.5	19	133	4"	79	165	244	29	244
3/4"	19	60	49	15	88	2"	43	102.5	84.5	19	165						

BALL VALVES



Field of application: Water
 Maximum work pressure: PN25
 Temperature: -20°C-120°C
 Female Thread connections comply with ISO228 (BS2779)
 Forged Body
 Vibration-proof handle nut
 The handle can be lever or butterfly fixed on stock steel nut.
 Also FxM, MxM thread is available
 1/4" -4"



LL-20009

Material list of main parts

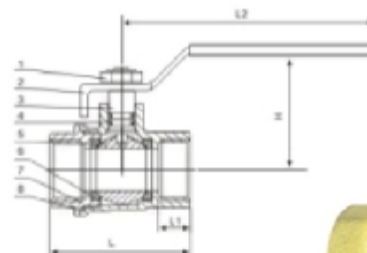
No.	Part name	Material	No.	Part name	Material
1	Lock nut	Steel	5	Ball	Brass chromed
2	Handle	Lever steel	6	Seat	PTFE
3	Stem	Brass	7	Body	Brass
4	O-ring	NBR	8	Bonnet	Brass

Structure Dimensions

Spec.	Port (mm)	L	L2
1/4"	10	45	80
3/8"	10	45	80
1/2"	15	48	80
3/4"	19	53	92

Spec.	Port (mm)	L	L2
1"	24	65	102
1-1/4"	29	80	130
1-1/2"	38	85	186
2"	48	100	145

Spec.	Port (mm)	L	L2
2-1/2"	58	135	210
3"	70	190	210
4"	85	170	260



LL-20010

All sizes rated 600WOG/150WSP
 Double O-ring stem seal and PTFE seat
 Two piece construction with a chrome plated steel ball
 Blowout-proof stem
 Quick quarter-turn for easy operation
 Designed for residential use with water, oil, gas
 Temperature range: -20°C-120°C
 Two kinds of end connection design: BSPT, NPT
 1/4" -4"

Material list of main parts

No.	Part name	Material	No.	Part name	Material
1	Lock nut	Steel	5	Ball	Steel chromed
2	Handle	Lever steel	6	Seat	PTFE
3	Stem	Steel	7	Body	Brass
4	O-ring	NBR	8	Bonnet	Brass

Structure Dimensions-Lever handle

Spec.	Port (mm)	L	H	L1	L2	Spec.	Port (mm)	L	H	L1	L2
1/4"	9	42	38.5	10	89	1"	22	67.5	52.5	15	121
3/8"	12	43	40.5	10	89	1-1/4"	30	76	60	16	139
1/2"	13	52	44	13	96	1-1/2"	37	87	66.5	17	137.5
3/4"	17	61.5	46	14	96	2"	47	105	74.5	19	137.5

▶ BALL VALVES

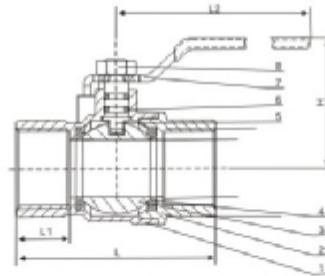
Field of application: Water, Oil or Gas
 Maximum work pressure: PN25
 Temperature: -20°C-120°C
 Female Thread connections comply with ISO228 (BS2779)
 Forged Body
 Vibration-proof handle nut
 Heavy Lever Handle



LL-20011

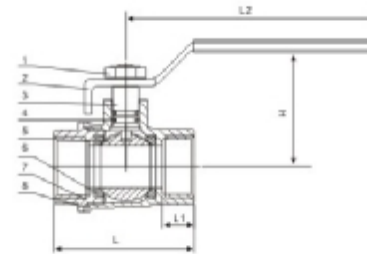
Material list of main parts

No.	Part name	Material	No.	Part name	Material
1	Body	Brass	5	Stem	Brass
2	Bonnet	Brass	6	O-ring	NBR
3	Ball	Brass chromed	7	Handle	Steel with PVC
4	Seat	PTFE	8	Lock nut	Steel



Structure Dimensions-Lever handle

Spec.	Port (mm)	L	H	L1	L2	Spec.	Port (mm)	L	H	L1	L2
1/2"	15	56	40	15	92	1-1/4"	32	93	68	24	104
3/4"	20	67	54	19	104	1-1/2"	40	100	80	22	165
1"	25	80	68	21	104	2"	50	120	87.5	26	165



LL20012

All sizes rated 600WOG/150WSP
 Double O-ring stem seal and PTFE seat
 Two piece construction with a chrome plated brass ball
 Blowout-proof stem
 Quick quarter-turn for easy operation
 Designed for residential use with water, oil, gas
 Temperature range -20°C-120°C
 Two kinds of end connection design:BS21 ,NPT
 1/4 " -4 "

Material list of main parts

No.	Part name	Material	No.	Part name	Material
1	Lock nut	Steel	5	Ball	Brass chromed
2	Handle	Lever steel	6	Seat	PTFE
3	Stem	Brass	7	Body	Brass
4	O-ring	NBR	8	Bonnet	Brass



LL-20012A

Structure Dimensions-Lever handle

Spec.	Port (mm)	L	H	L1	L2	Spec.	Port (mm)	L	H	L1	L2	Spec.	Port (mm)	L	H	L1	L2
1/4"	8	41	30.5	12	75	1"	22	67	56	16	112	2-1/2"	62	121	120.5	25	244
3/8"	10	44	39.5	12	75	1-1/4"	31.5	76	73	16	140	3"	73	141.5	132	26.5	244
1/2"	14	50	45	13	98	1-1/2"	39.5	89	82.5	16	140	4"	90	163	144.5	27	244
3/4"	19	55	53	16	98	2"	49.5	99	92	16	162						

BALL VALVES

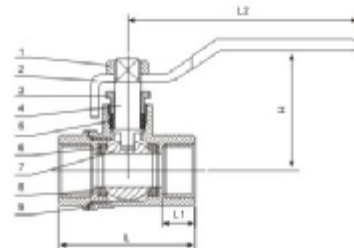


LL-20013



LL-20013A

All sizes rated 600WOG/150WSP
 Press nut
 Double O-ring stem seal and PTFE seat
 Two piece construction with a chrome plated brass ball
 Blowout-proof stem
 Quick quarter-turn for easy operation
 Designed for residential use with water, oil, gas
 Temperature range :-20°C-150°C
 Two kinds of end connection design:BS21,NPT
 1/4" -4"



Material list of main parts

No.	Part name	Material	No.	Part name	Material
1	Lock nut	Steel	6	Seat	PTFE
2	Handle	Lever steel	7	Ball	Brass chromed
3	Gland nut	Steel	8	Bonnet	Brass
4	Stem	Brass	9	Body	Brass
5	Packing Material	PTFE			

Structure Dimensions-Lever handle

Spec.	Port (mm)	L	H	L1	L2	Spec.	Port (mm)	L	H	L1	L2
1/4"	8	41	39.5	12	75	1"	22	67	59	16	112
3/8"	10	44	39.5	12	75	1-1/4"	31.5	76	73	16	140
1/2"	14	50	45	13	98	1-1/2"	39.5	89	82.5	16	140
3/4"	19	56	53	16	98	2"	49.5	99	92	16	192

All sizes rated 600WOG(Water,Oil or Gas)
 150PSI WSP (Steam)
 With brass press nut seal and PTFE seat
 Two piece construction with a chrome plated brass ball
 Blowout-proof stem
 Quick quarter-turn for easy operation
 Temperature range :-20°C-150°C
 End connection design: Solder Ends
 1/2" -2"



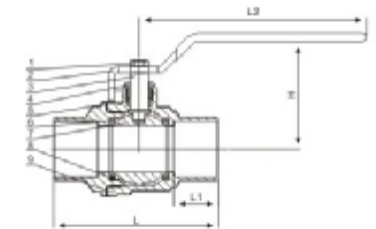
LL-20014



LL-20014A

Material list of main parts

No.	Part name	Material	No.	Part name	Material
1	Locknut	Steel	6	Seat	PTFE
2	Handle	Steel	7	Ball	Brass chromed
3	Stem	Brass	8	Body	Brass
4	Gland nut	Brass	9	Bonnet	Brass
5	Packing material	PTFE			



Structure Dimensions-Lever handle

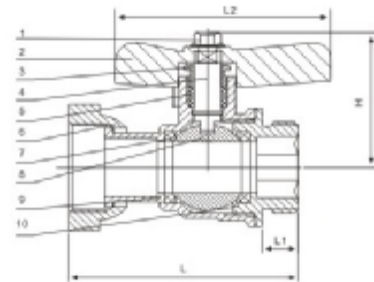
Spec.	Port (mm)	L	H	L2	Spec.	Port (mm)	L	H	L2
1/2"	15	56.5	45.5	86	1-1/4"	32	103.5	66.5	116
3/4"	19	71.5	50.5	94	1-1/2"	40	112	70.5	145
1"	24	83.5	53.5	116	2"	50	134	76	145

BALL VALVES

Forged brass body with brass union
 Brass ball, brass stem and brass butterfly handle
 Field application: Water, oil and gas



LL-20015



Material list of main parts

No.	Part name	Material	No.	Part name	Material
1	Lock nut	Steel	6	Union	Brass
2	Handle	Brass	7	Seal	PTFE
3	Gland nut	Brass	8	Ball	Brass Chromed
4	Stem	Brass	9	Bonnet	Brass
5	Packing material	PTFE	10	Body	Brass



LL-20015A



LL-20015B



LL-20015C

Structure Dimensions-Lever handle

Spec.	L	H	L1	L2
3/4"	67.5	43.5	11	62

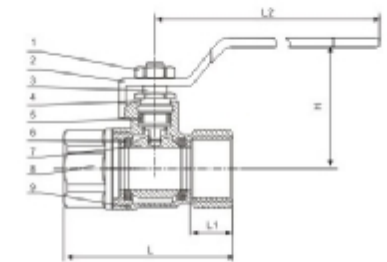
Female/female threads
 Lever handle in steel
 Body in nickel-plated brass
 Maximum work pressure: PN16
 Minimum and maximum working temperatures:
 -20° C, 150° C in absence of steam
 Threads: ISO228 (equivalent to DIN259 and BS2779)



LL-20016A

Material list of main parts

No.	Part name	Material	No.	Part name	Material
1	Lock nut	Steel	6	Seat	PTFE
2	Handle	Steel	7	Ball	Brass
3	Gland nut	Brass	8	Bonnet	Brass
4	Stem	Brass	9	Body	Brass
5	Packing material	PTFE	10	Butterfly Handle	Aluminum or etc



LL-20016

Structure Dimensions-Lever handle

Spec.	Port (mm)	L	H	L1	L2	Spec.	Port (mm)	L	H	L1	L2
1/2"	14.5	55	47	14.5	96	1-1/4"	30	83.5	70	18.5	153
3/4"	19	62	51	14.5	96	1-1/2"	37	99	74	20	153
1"	23	69.5	55	15	121	2"	45	112	82	23	178

BALL VALVES

Field of application: Connection of pex pipe for water supplying

Maximum work pressure: PN16

Temperature: -20°C-120°C

Thread connections comply with ISO228 (BS2779)

Forged Body, surface nickel plated, chromed ball slide with Teflon

Vibration-proof handle nut

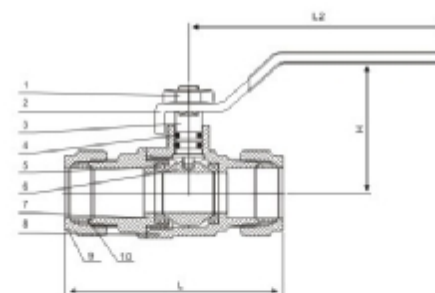
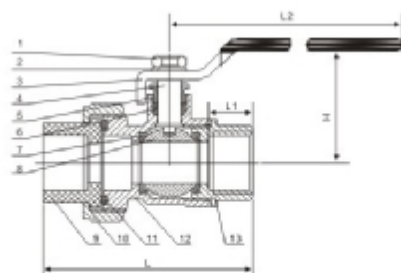


Material list of main parts

No.	Part name	Material	No.	Part name	Material
1	Lock nut	Steel	8	Ball	Brass Chromed
2	Washer	Steel	9	Connection	Brass
3	Handle	Steel	10	Nut	Brass
4	Stem	Brass	11	Gasket	NBR
5	Gland nut	Brass	12	Body	Brass nickel plated
6	Packing material	PTFE	13	Connection	PPR
7	Seat	PTFE			

Structure Dimensions-Lever handle

Spec.	L	H	L1	L2
20x20	88	51	12	95
25x25	109	50	28	96
32x32	112	61	20	119
40x40	130	69	25	135
50x50	143	81	30	145
63x63	145	83	27	142



Material list of main parts

No.	Part name	Material	No.	Part name	Material
1	Lock nut	Steel	8	Ball	Brass Chromed
2	Handle	Steel	7	Bonnet	Brass
3	Stem	Brass	8	Body	Brass
4	O-ring	NBR	9	Nut	Brass
5	Seat	PTFE	10	Sleeve	Brass

Structure Dimensions-Lever handle

Spec.	L	H	L2
15mm	66	32.5	83
22mm	79	37.5	95
28mm	89.5	51.5	105
35mm	102	69	136
42mm	116.5	71	144.5
54mm	137	76	145



LL-20022

Technical Specifications

Body material: forged brass nickel plated

Ball material: brass nickel/chrome plated

Body seal: Teflon PTFE

Suitable for: steam, water, oil and air.

All sizes rated PN16

Full bore with quarter turn operation

Blow-out and vandal-proof assembly

Press compression ends to EN 1254/2 (BS864/2)

▶ BALL VALVES



LL-20023

Structure Dimensions-Lever handle

Code	Spec.
	F1/4" × 8mm
	F3/8" × 8mm
	F1/2" × 8mm

Technical Specifications

Nominal Pressure: 1.6MPa

Working Medium: Water & Non-Causticity Liquid & Saturated Steam & Coal gas. Limited in Indoor for Coal gas,

The maximum Pressure is 0.4MPa

Working Temperature: $0^{\circ}\text{C} \leq t \leq 100^{\circ}\text{C}$

Max Working Pressure: Normal Temperature, Non-Shock) 1.6MPa (Gas 0.4MPa)

Butterfly or Long Steel Handle For Option

Thread Joint Between Body & Cap Using Anti-oxygen Glue

Thread: ISO 07

MINI GAS



LL-20024

1/4" BSP Female / Female and wall bracket
1/2" BSP Female / Female and wall bracket



LL-20024A

1/4" BSP Female / Female and wall bracket
1/2" BSP Female / Female and wall bracket

Technical Specifications

Body material: forged brass nickel plated

Ball material: brass nickel/chrome plated

Body seal: Teflon PTFE

Shaft seal: nitrile 2 × NBR (max. temp + 90°C)

Handle: nylon 6:6 - glass fiber reinforced (max. temp + 210°C)

Max. operating pressure: 20 bar

Anti-blow out stem with 1/4 turn positive shut-off

Full bore operation - minimum pressure drop

100% factory tested

Conforms to European Standard for Gas Valves - EN 331:1995

Also suitable for diesel

▶ BALL VALVES

Mini Gas/Diesel Ball Valves Foot Mounted

Technical Specifications

Body material: forged brass nickel plated
 Ball material: brass nickel/chrome plated
 Body seal: Teflon PTFE
 Shaft seal: nitrile 2 × NBR (max. temp + 90°C)
 Handle: nylon 6:6 - glass fiber reinforced (max. temp+ 210°C)
 Max. operating pressure: 20 bar
 Anti-blow out stem with 1/4 turn positive shut-off
 Full bore operation - minimum pressure drop
 100% factory tested
 Conforms to European Standard for Gas Valves - EN 331:1995
 Also suitable for diesel



LL-20025
 Compression End 1/4" × 8mm
 Compression End 3/8" × 8mm
 Compression End 5/16" × 8mm



LL-20025A
 Compression End 1/4" × 8mm
 Compression End 3/8" × 8mm
 Compression End 5/16" × 8mm



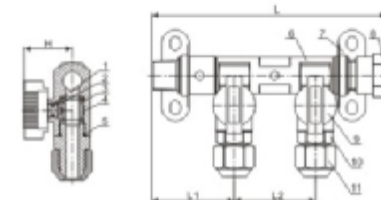
LL-20025B
 Compression End 1/2"



LL-20025C
 Compression End 1/4" × 8mm
 Compression End 3/8" × 8mm
 Compression End 5/16" × 8mm

Brass Manifold Nickel Plated with compression end and steel bracket

Body material: forged brass nickel plated
 Ball material: brass nickel plated
 Body seal: Teflon PTFE
 Handle: nylon 6:6 - glass fiber reinforced (max. temp+ 210°C)
 Max. operating pressure: 20 bar
 Anti-blow out stem with 1/4 turn positive shut-off
 100% factory tested
 Conforms to European Standard for Gas Valves - EN 331:1995
 Also suitable for diesel



LL-20026

Material list of main parts

No.	Part name	Material	No.	Part name	Material
1	O-ring	NBR	6	Body	Brass
2	Stem	Brass	7	Bracket	Steel
3	Seat	PTFE	8	Cap	Brass
4	Ball	Brass	9	Handle	Nylon
5	O-ring	NBR	10	Bonnet	Brass

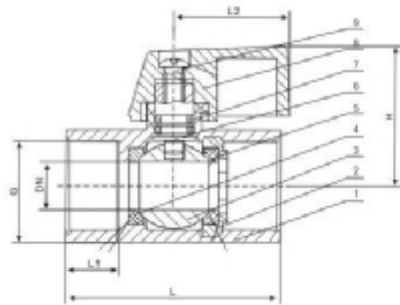
Brass Manifold Nickel Plated with compression end and steel bracket

Code	Spec.	L	L1	L2	H
LL-20026	1/2" × 1/2" × 2	137	59	47	37
LL-20026	1/2" × 1/2" × 3	195	59	47	37
LL-20026	1/2" × 1/2" × 4	234	59	47	37

▶ BALL VALVES



LL-20027



Female/female Mini valve with aluminum handle nickel plated

Code	Spec.	Code	Spec.
	1/4"		3/4"
	3/8"		1"
	1/2"		



LL-20028

Male/female Mini valve with aluminum handle nickel plated

Code	Spec.	Code	Spec.
	1/4"		3/4"
	3/8"		1"
	1/2"		



LL-20029

Female/female Mini valve with aluminum handle chrome plated

Code	Spec.	Code	Spec.
	1/4"		3/4"
	3/8"		1"
	1/2"		



LL-20030

Male/female Mini valve with aluminum handle chrome plated

Code	Spec.	Code	Spec.
	1/4"		3/4"
	3/8"		1"
	1/2"		



LL-20031

Male/male Mini valve with aluminum handle chrome plated

Code	Spec.	Code	Spec.
	1/4"		3/4"
	3/8"		1"
	1/2"		

▶ BALL VALVES

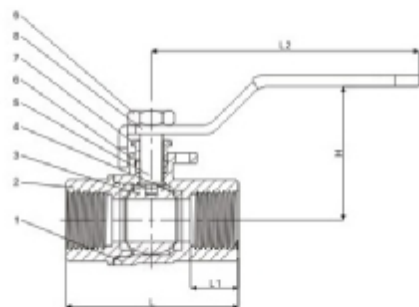
Female/female threads
 Lever handle in steel
 Body in nickel-plated brass
 Maximum work pressure: PN32
 Minimum and maximum working temperatures:
 -20° C, 150° C in absence of steam
 Threads: ISO228 (equivalent to DIN259 and Bs2779)



LL-20032

Material list of main parts

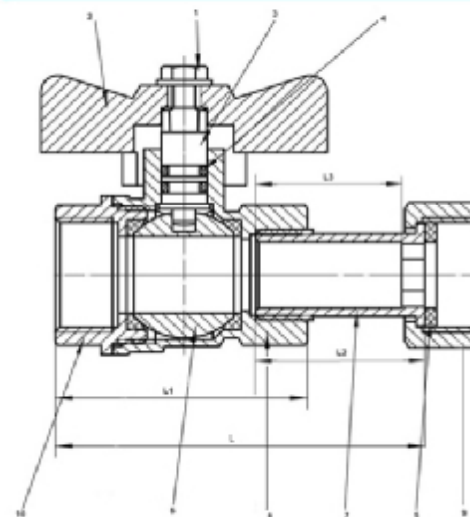
No.	Part name	Material	No.	Part name	Material
1	Body	Brass	6	Gasket	PTFE
2	Bonnet	Brass	7	Press Nut	Steel
3	Ball	Brass Chromed	8	Handle	Steel with PVC
4	Seat	PTFE	9	Lock nut	Steel
5	Stem	Brass			



Structure Dimensions-Lever handle

Spec.	Port (mm)	L	H	L1	L2	Spec.	Port (mm)	L	H	L1	L2
1/2"	15	58.5	43	16	100	1-1/4"					
3/4"	20	67.5	48.5	17.5	100	1-1/2"					
1"	25	80.5	56	20.5	111	2"	50	114	90	22	152

www.librass.com



Material list of main parts

No.	Part name	Material	No.	Part name	Material
1	Lock nut	Steel	6	Ball	Brass Chromed
2	Handle	Brass	7	Union	Brass
3	Stem	Brass	8	Body	Brass
4	O-ring	NBR	9	Nut	Brass
5	Gasket	NBR	10	Screw	Brass

Structure Dimensions-Lever handle

Spec.	Port (mm)	L	L1	L2	L3
1/2"	13	64.5	29.6	44	26.5
3/4"	17	76.5	32	56.5	28



LL-20033

Technical Specifications

Body material: forged brass
 Ball material: brass nickel/chrome plated
 Body seal: Teflon PTFE
 Suitable for: steam, water, oil and air.
 All sizes rated PN16
 Full bore with quarter turn operation
 Blow-out and vandal-proof assembly
 Press compression ends to EN 1254/2 (BS864/2)

www.librass.com

▶ APPLIANCE VALVES

Specification

Fields of applications: Water.

Maximum working pressure: PN10.

Maximum working temperature: 65°C.

All valves are manufactured to BS6675.

Compression connections comply with EN1254-2.

Male thread connections are to ISO228(BS2779).

Forged brass body.



LL-20037

Washing Machine Valve, Tee
Spec.: 15mm X 3/4" x 15mm



LL-20038

Washing Machine Valve, Angled
Spec.: 15mm X 3/4"



LL-20039

Washing Machine Valve, Straight
Spec.: 15mm X 3/4"

Specification

Fields of applications: Water.

Maximum working pressure: PN10.

Maximum working temperature: 65°C.

All valves are manufactured to BS6675.

Compression connections comply with EN1254-2.

Male thread connections are to ISO228(BS2779).

Forged brass body.



LL-20042

Isolating Valve C x C
Spec.: 15mm
22mm



LL-20041

Isolating Valve C x C
Spec.: 15mm
22mm



LL-20040

Service Valve, Angled
Spec.: 15mm X 1/2"
22mm X 3/4"